



# COMMON GROUND ALASKA SEED STARTING

## TIMELINE



OUR GENERAL  
GUIDELINE



DON'T START TOO  
EARLY OR TOO LATE



APPLICABLE FOR  
ALL OF SOUTH  
CENTRAL AK



ZONES 2-4

[LEARN MORE](#)

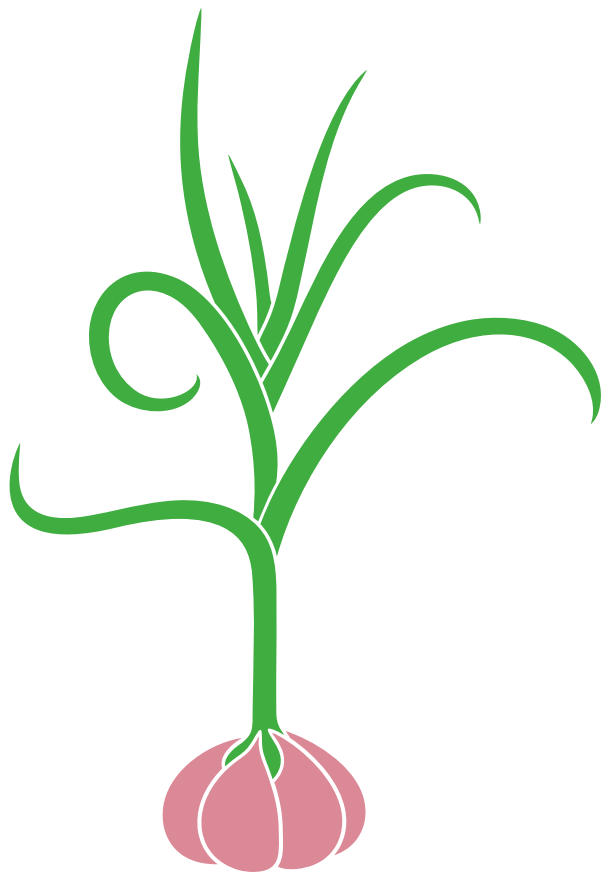
# QUICK NOTE:

These timelines serve us well in our zone 2/3 microclimate. It is important that you know your zone and microclimate for planting. Always feel free to reach out with questions.

@commongroundalaska



# EARLY FEBRUARY



ECHINACEA

---

LEEKs

---

ONIONS

---

CELERY

---

BRUSSELS SPROUTS

---

ROSEMARY

---

STEVIA

---

LEMON BALM

---

\*Some seeds are duplicated across pages because we plant at both times, depending on the year and our busyness.

I put them in both to reflect that it's okay if you're off by a couple of weeks - keep planting!

@commongroundalaska

# LATE FEBRUARY



PANSIES

---

THYME

---

OREGANO

---

HOT PEPPERS

---

LAVENDER

---

SAGE

---

LOBELIA

---

APPLE MINT

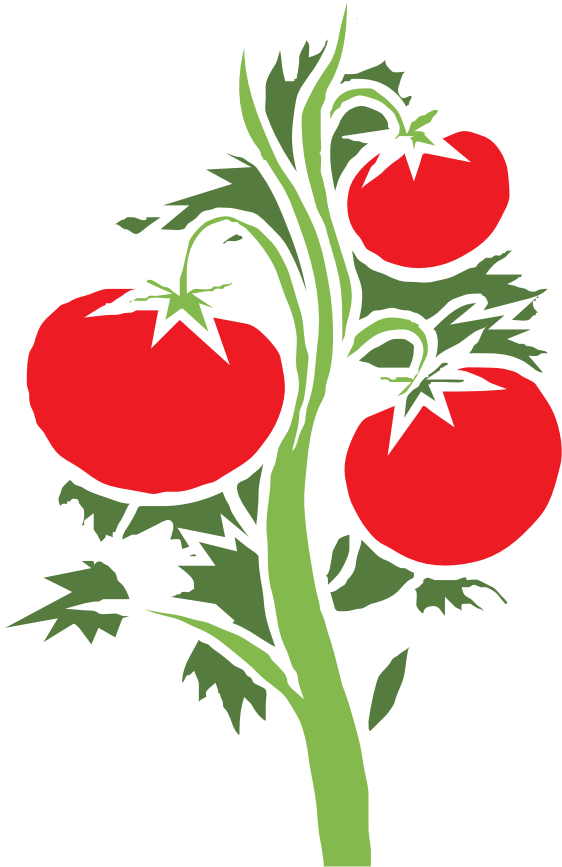
---

\*Some seeds are duplicated across pages because we plant at both times, depending on the year and our busyness.

I put them in both to reflect that it's okay if you're off by a couple of weeks - keep planting!

@commongroundalaska

# MID MARCH



TOMATOES

---

BELL PEPPERS

---

MARIGOLDS

---

HOT PEPPERS

---

LAVENDER

---

SAGE

---

CALENDULA

---

NASTURTIUM

---

\*Some seeds are duplicated across pages because we plant at both times, depending on the year and our busyness.

I put them in both to reflect that it's okay if you're off by a couple of weeks - keep planting!

@commongroundalaska

# EARLY - MID APRIL



\*Some seeds are duplicated across pages because we plant at both times, depending on the year and our busyness.

I put them in both to reflect that it's okay if you're off by a couple of weeks - keep planting!

BROCCOLI

---

CAULIFLOWER

---

CABBAGE

---

ALYSSUM

---

CILANTRO

---

CANTALOUPE

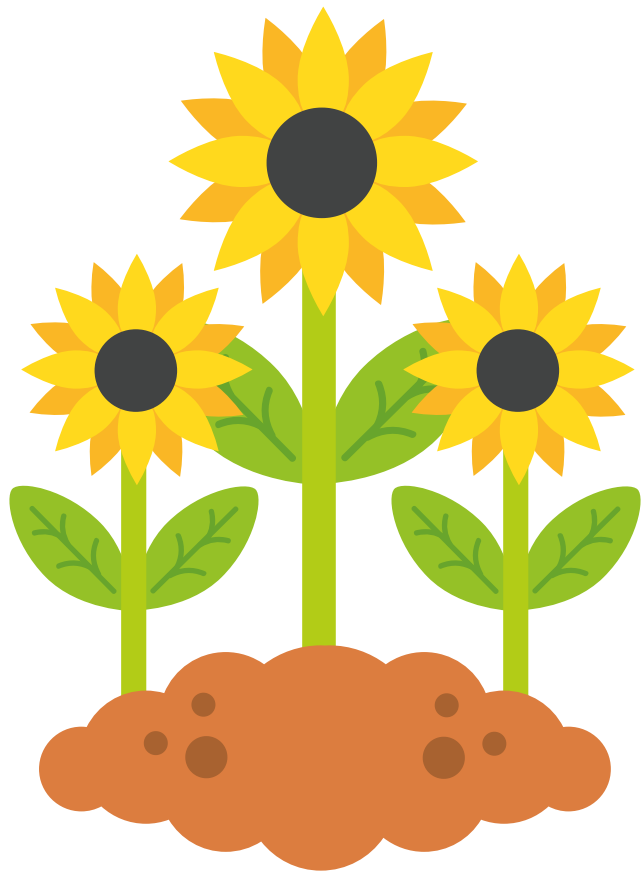
---

CUCUMBERS

---

@commongroundalaska

# LATE APRIL



ZUCCHINI

---

SPAGHETTI SQUASH

---

PUMPKINS

---

ALYSSUM

---

CILANTRO

---

CANTALOUPE

---

CUCUMBERS

---

SUNFLOWERS

---

\*Some seeds are duplicated across pages because we plant at both times, depending on the year and our busyness.

I put them in both to reflect that it's okay if you're off by a couple of weeks - keep planting!

@commongroundalaska

# DIRECT SOW

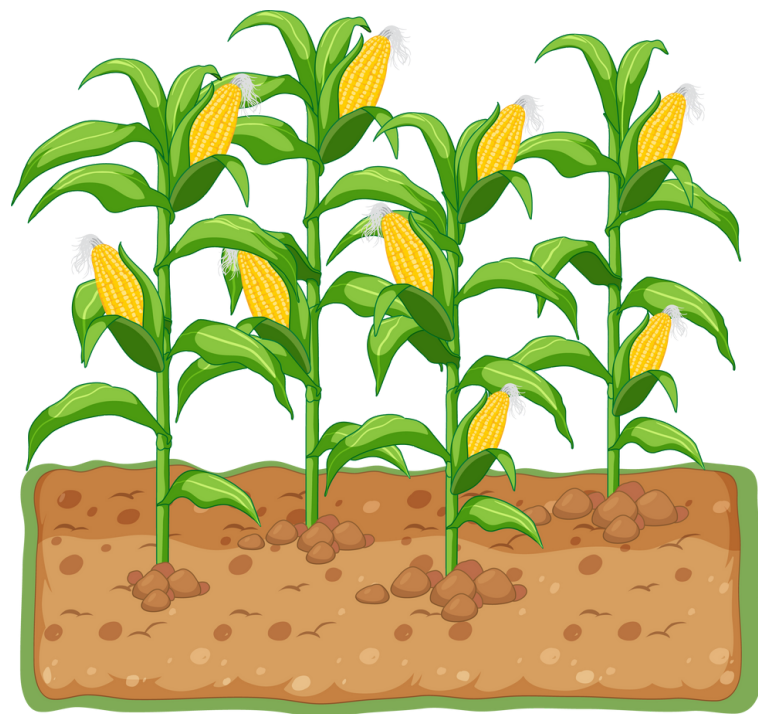
May

# DIRECT SOW

June

- 
1. Lettuce/Chard
  2. Corn (under cover)
  3. Carrots
  4. Beets
  5. Radishes
  6. Potatoes
  7. Peas
  8. Spinach
  9. Cilantro
  10. Dill

1. Beans
2. Zucchini & Squash if you didn't start from seed.





# TRANSPLANTING NOTE:

**IMPORTANT:** Always harden off your plants before transplanting.

Also, we personally don't transplant ANY plants outside (except strawberries) until after June 1st.

We've lost most of our garden over Memorial Weekend due to a late frost.

@commongroundalaska

